

# Career Switchers or Second Career

Images to support news item April 2024



[www.active-together.org](http://www.active-together.org)

**Greater rewards, not just money – check out some of the wider benefits which the sector workforce has reported.**

Inclusive Life Changing Influential  
Empowering Rewarding Exciting Fitness  
Well-being Flexible Professional  
Inspiring Leadership Caring  
Powerful Challenge Friendship  
Self-Development Enabling Passionate  
Responsibility Progressive Active  
Opportunities Engaging Varied Teamwork  
People Orientated Fulfilling Money Rewarding Social

**By joining the sector's workforce, you'll be generating amazing returns for people, and the health and wellbeing of our local communities.**

**£1 spent = £4 in return**

Every £1 spent on sport and physical activity generates almost £4 in return across health and wellbeing, stronger communities and the economy\*

\* Measuring the Social and Economic Impact of Sport in England, 2020

SPORT ENGLAND

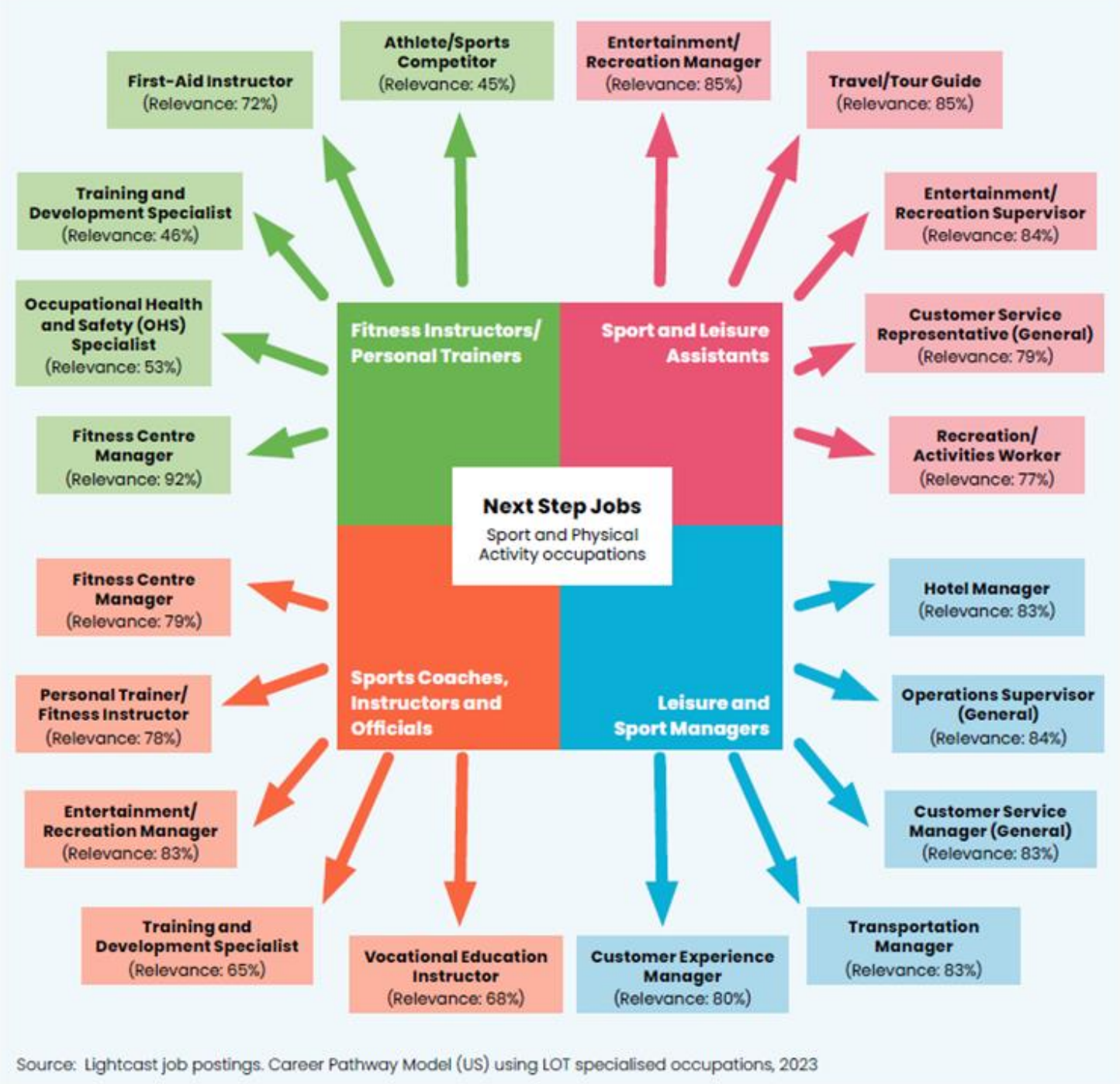
The infographic features a blue background with white text. At the top, the headline '£1 spent = £4 in return' is written in a large, bold, blue font. Below this, a paragraph of text explains the return. To the right of the text is an illustration of a single blue pound coin with a white arrow pointing to a stack of four blue pound coins. At the bottom left, there is a small footnote, and at the bottom right is the Sport England logo.

**Source:** Sport England – Measuring the Social and Economic Impact of Sport in England 2020.

# Check out some of the Sport and Physical Activity occupations:



Source: CIMSPA Workforce Insight Report 2023. [cimspa-workforce-insight-report-2023.pdf](https://www.cimspa.org.uk/wp-content/uploads/2023/07/cimspa-workforce-insight-report-2023.pdf)



Source: Lightcast job postings. Career Pathway Model (US) using LOT specialised occupations, 2023

## Work to fit around your other commitments:

As we age, you're not alone if you're looking for different hours of work:

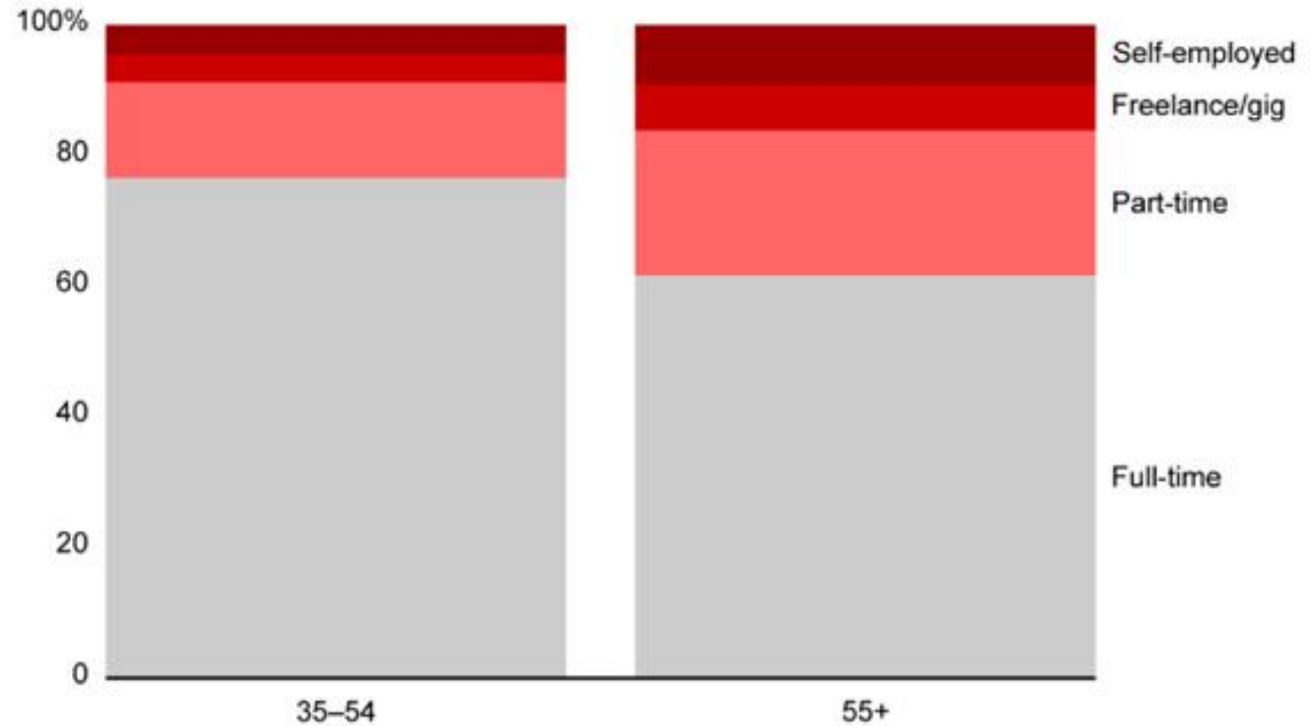


**Source:** [Better with Age: The Rising Importance of Older Workers | Bain & Company](#)

Figure 8

The share of part-timers and self-employed workers rises as retirement approaches

Composition of workers, by job type and age group



Note: Respondents from US, Germany, France, Italy, Japan, Australia, Canada, Finland, Denmark, Norway, Saudi Arabia, Sweden, UK, and UAE  
Source: Bain Worker Survey (n=27,700)

# What's more older workers feel more loyal to their employers:



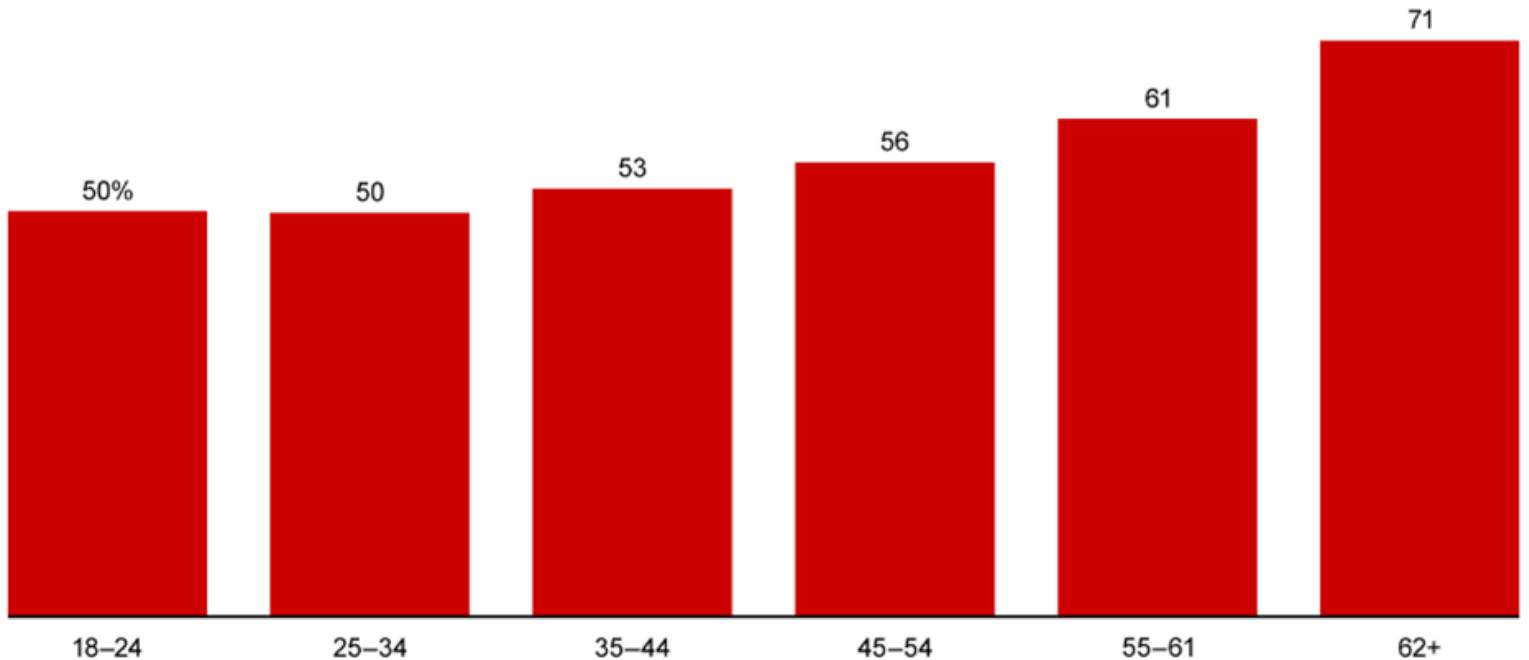
Source: Better with Age: The Rising Importance of Older Workers | Bain & Company

Figure 10

## Globally, older workers feel more loyal to their employers



Percentage of workers globally who feel loyal to employers, by age group



Notes: Includes all 19 countries surveyed; excludes contract/freelance workers  
Source: Bain Worker Survey (n=32,000)

**For more information click the link below:**

- [Careers & Job Finder | Active Together \(active-together.org\)](https://www.active-together.org)